



Château de la Triboulette Vouzeron - France

A restored French Château in the Heart of Sologne

Located only two hours south of Paris, this neo-Gothic and Renaissance Château is one of its kind.

This **6 levels** build Château set over 3000 m2, boasts 21 bedrooms and 25 rooms, an elevator and is surrounded by an enclosed park of 52 ha.

This exceptional Château is fully decorated, with exquisite taste and to very high standards and could be offered for sale together with its impressive interiors.

The main chateau has been completely renovated with new cabling for domotics, internet/wifi and other technical innovations. The heating and plumbing systems were also installed to meet the needs of a modern-day chatelain.

This castle is both a magnificent château for receiving guests and a comfortable family home. This luxurious residential home also offers huge potential for additional revenue streams, including as a wedding venue, a hub for corporate events, B & B, hospitality, or retreats.

There is a small airport located only 30 minutes away from the chateau. The international airport at Orly, Paris, is one and a half hours' drive away. The chateau has ample landing spaces for a helicopter landing platform.

A truly luxurious, quiet en peaceful residence.

A remarkable collaboration between three exceptional talents

France boasts thousands of chateaux, but few of them carry the signatures of the top design brains of their era.

Three men of genius collaborated to create the masterpiece that is the Château de Vouzeron. The architectural prowess of Gabriel-Hippolyte Destailleur, the landscaping expertise of Henri Duchêne and the engineering brilliance of Gustave Eiffel combined to produce an extraordinary and enduring architectural gem.



Gabriel-Hippolyte Destailleur

An internationally renowned **architect** with an impressive portfolio of royal and aristocratic clients.

For the Rothschild family Destailleur designed the Albert de Rothschild Palace in Vienna and the acclaimed **Waddesdon Manor**, England.

It was also in England that the exiled French Empress commissioned him to design a funerary chapel for Napoléon III at Farnborough.



Henri Duchêne

A prominent French **landscape architect** and passionate architect in his own right, Duchêne was a key figure in the 19th century revivalism of the **French Garden** in the **Versailles style**.



Gustave Eiffel

A renowned **engineer** and **architect** who needs no introduction, Eiffel's iconic **Tower in Paris** is an enduring monument to his sense of precision, innovation and architectural élan.

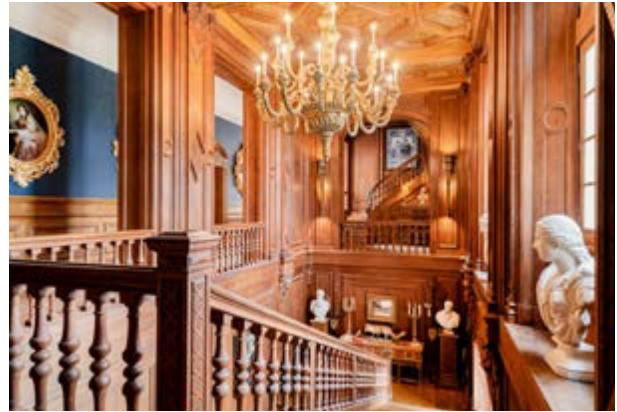


Destailleur's designs at **Waddesdon Manor** for the **Rothschild family** were influenced by his own project of 1885 for the Château de Vouzeron in the Cher for Baron Roger, where he created his template for French Renaissance revivalism.

At a glance



Entrance hall



Staircase



Grand Salon



Dining room



The library



The kitchen



The billiard room

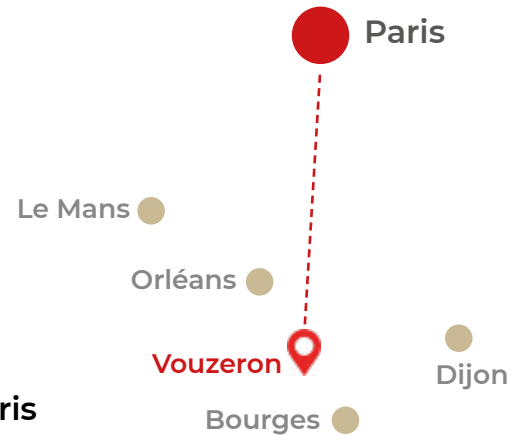


The park

Practical information



3 main buildings
3000 sqm
6 Floors + basement
25 Rooms
21 Bedrooms
10 Bathrooms
Elevator
Enclosed park of 52 ha
2 hours South from Paris



Price : confidential



Nearby airports

There is a small airport located only 30 minutes away from the chateau. The international airport at Orly, Paris, is one and a half hours' drive away.

There is a very well equipped airport for **privat aircraft** in Bourges with a runway of over 3000 mtr. There is a huge one in Chateauroux.



Heliport

The chateau has ample landing spaces for a helicopter landing platform.



New electrical wiring, heating and plumbing

The main chateau has been completely renovated with new cabling for domotics, internet/wifi and other technical innovations. The heating and plumbing systems were also installed to meet the needs of a modern-day chatelain.



An adaptable property

This luxurious residential home also offers huge potential for additional revenue streams, including as a wedding venue, a hub for corporate events, Bed & Breakfast, hospitality, or retreats.



Contact



chateau.triboulette2023@gmail.com

www.chateau-triboulette.com